

Chapter 7. ClientMate - Windows Shutdown Utility

ClientMate is a utility for connecting to the RUPS 2000, UPSilon 2000 and NetAgent. This utility is for the Windows platform. When the ClientMate get the power failure signal from the RUPS2000, UPSilon 2000, or NetAgent. The ClientMate will save the files and shutdown the system gracefully. When the hardware installation of the NetAgent has been completed, you could install the ClientMate on any of the Windows system on the network. When the ClientMate detects the AC Fail, Battery Low, Schedule Shutdown signals from the NetAgent, it will save the file and shutdown the system. Please check the operation description here below.

Section1. Install ClientMate

- ❶ Put the NetAgent Utility CD into the CD driver. And execute the “ClientMate” program.
- ❷ After complete installation, there will be a ‘ClientMate’ group in the Windows Start group.



Fig.41 ClientMate Group

- ❸ Click “ClientMate” to initiate the ClientMate and start using the ClientMate.

Section2. Using ClientMate

Please find the ClientMate main window here below:press the left icon to enter the configuration dialog. On the right of the window is the current status of the UPS.

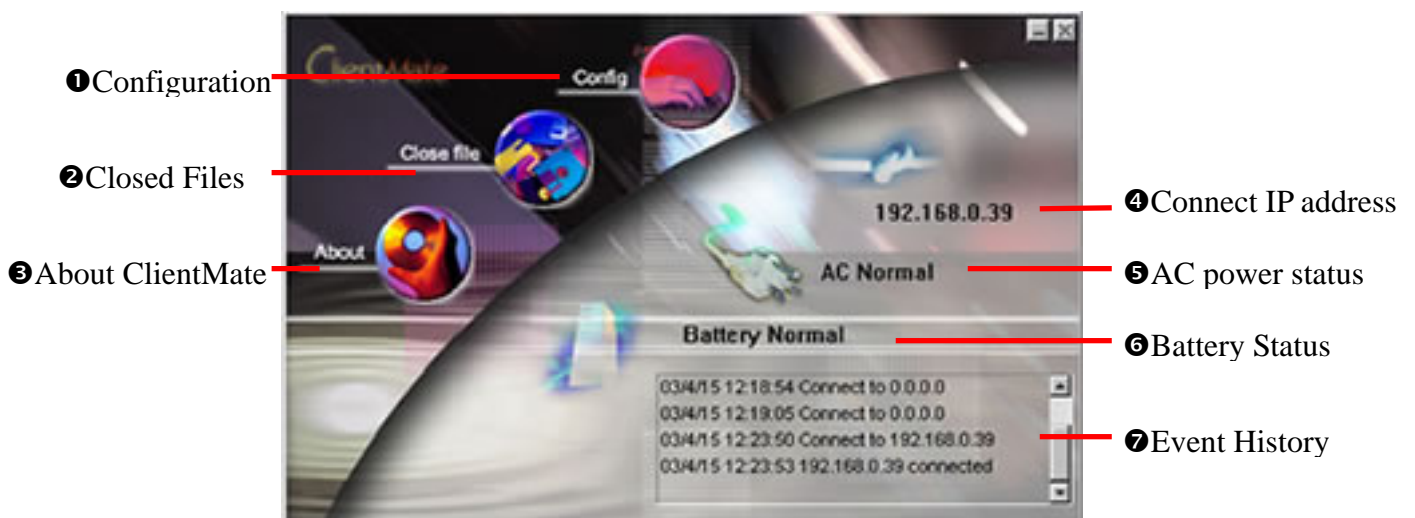


Fig.42 ClientMate main window

2.1 Configuration

When the ClientMate gets the signal from the NetAgent about the AC power failure or battery low signals, the ClientMate will based on the configuration below to initiate the shutdown process. The details of the configuration are here below.

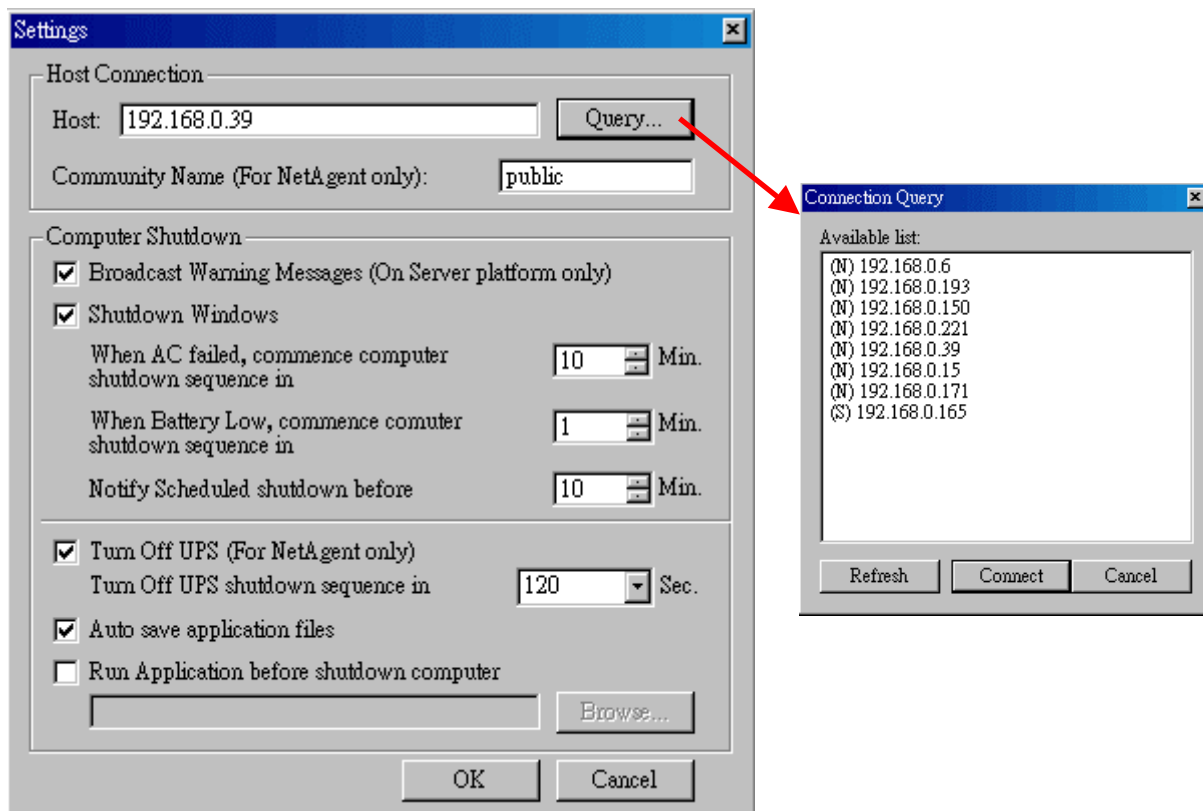


Fig.43 ClientMate: Configuration

- ◆ **Host Connection**
Configure the Host connection IP address.
- ◆ **Host**
Press the “Query” to search the host on the network automatically. If a host located on different network segment. Please input the IP in the HOST edit box.
The IP searched on the Connect Query:
(N): The NetAgent Host
(S): The UPSilon2000 or RUPS2000 Host
- ◆ **Community Name (For NetAgent only)**
The community name of the NetAgent, thus the ClientMate could be able to make connection to NetAgent.
- ◆ **Computer Shutdown**
Setting the shutdown configurations.
- ◆ **Broadcast Warning Messages (On Server platform only)**
To configure if sending the warning messages when power failed (only for WinNT, Win2000 and XP server operating system)
- ◆ **Shutdown Windows**
To configure if shutdown the Windows system when power failure.
- ◆ **When AC failed, commence computer shutdown sequence in xx Min.**
To configure the time delay between the AC failure and the system shutdown.

- ♦ **When Battery Low, commence computer shutdown sequence in xx Min.**
To configure the time delay between the Battery Low and system shutdown.
- ♦ **Notify Scheduled shutdown before xx Min.**
Time before the 'Schedule Shutdown' to make notification.
- ♦ **Turn Off UPS (For NetAgent Only)**
Setting if to turn-off NetAgent UPS AC power after system shutdown.
- ♦ **Turn Off UPS shutdown sequence in xx Sec.**
Time delay of turn-off the UPS power.
- ♦ **Auto save application files**
Check if to save the application files before system shutdown.
- ♦ **Run Application before shutdown computer**
Execute the application before system shutdown.

2.2 Closed Files

User could review all the files closed during previous shutdown process. If the "Auto save application files" function has been turn-on in the "Setting" dialog, the details of the closed application and files could be reviewed here.

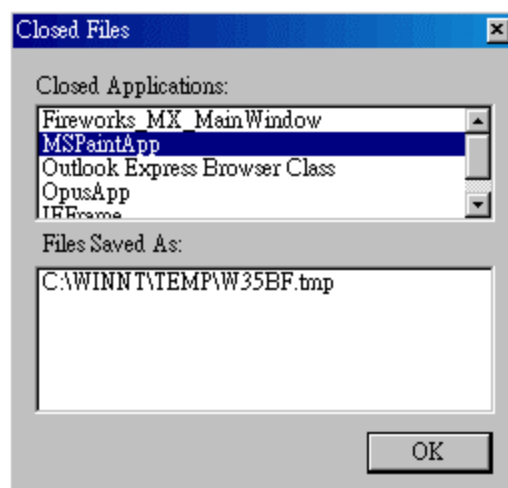


Fig.44 ClientMate: Closed Files

2.3 About

Press this button could review the version information of the ClientMate, as here bellowed.

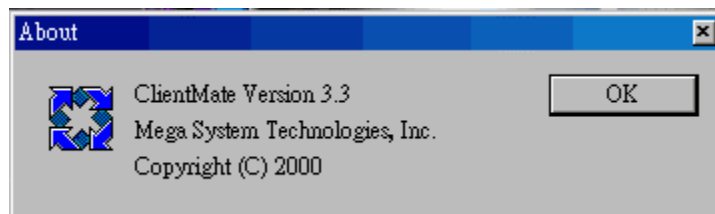
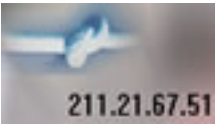





Fig.45 ClientMate:About

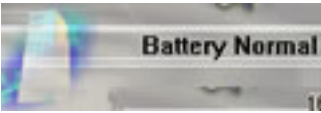

2.4 IP address of connection

Status ICON	Description
	Already connect to NetAgent UPS at IP 211.21.67.51
	Does not connect to any NetAgent.

2.5 AC power status

Status ICON	Description
	The connected NetAgent UPS AC power is normal.
	The connected NetAgent UPS AC power is failed.

2.6 Battery Status

Status ICON	Description
	The connected NetAgent UPS battery is in normal condition.
	The connected NetAgent UPS is in battery low condition.

2.7 Status History

In the right-lower corner of ClientMate, the 'Status History' showing all the network status and UPS status happened.

