

PRODUCTO		POLARIS I-U5E CA I AL 4 PAIR 0.5MM CCA UTP INDOOR CAT5E NETWORK CABLE	
CONFIGURATION & PHYSICAL CHARACTERS			
CONDUCTOR	MATERAIL	CCA (COPPER CLAD ALUMINUM)	
	DIAMETER OF INNER CONDUCTOR	0.5±0.02MM	
INSULATION	MATERAIL	NEW HDPE	
	THICKNESS	0.2MM±0.02MM	
	DIAMETER	0.88±0.02MM	
RIPCORD		YES	
JACKET	MATERAIL	NEW PVC	
	THICKNESS	0.6±0.1MM	
	COLOR	GREY	
	DIAMETER	5.1±0.2MM	
ELECTRICAL CHARACTERISTICS			
CHARACTERISTIC IMPEDANCE		100±15 MHZ	
OPERATION TEMPERATURE		-20°C- + 50°C	
SPARE TEST		2000±250V	
DIELECTRIC STRENGTH		2500V DC/3 SECONDS	
INSULATION RESISTANCE TEST		MIN 5X10 ³ Ω/KM	
CONDUCTOR RESISTANCE		MAX 255Ω/KM AT 20°C	
RESISTANCE UNBALANCE		MAX 3%	
CAPACITANCE UNBALANCE		MAX 300PF/100M	
MANUAL CAPACITANCE		MAX 5600PF/100M	

PACKING

1) 100M/ROLL, 200M/ROLL, 305M/ROLL, 500M/ROLL OTHER LENGTHS AVAILABLE ACCORDING TO CLIENT'S REQUIREMENT

2) INNER PACKING: COLOR BOX, WOODEN REEL, PLASTIC REEL, AVAILABLE

3) OUTER PACKING: PULL OUT BOX AVAILABLE

4) OTHER PACKING AVAILABLE ACCORDING TO CLIENT'S REQUERIMENT

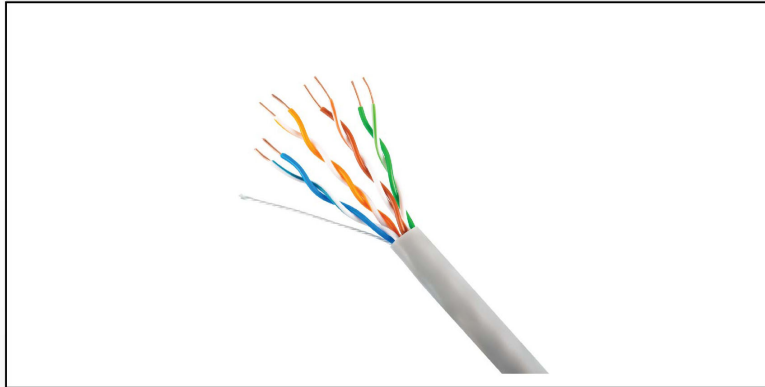
APPLICATIONS

TWISTED PAIR FOR TRANSMISSION VIDEO SIGNA,100BASE-TX ,100BASE-T4,100VG-ANYLAN,1000BASE-T,ETHERNET,ATM ETC

STANDARD

COMPLIES WITH TIA/EIA-568B & ISO/IEC 11801

PICTURE FOR THE CABLE



POLARIS
energy systems

POLARIS
energy systems

POLARIS
Energy Systems

Agustin Álvarez 3555, Villa Martelli
Buenos Aires, CABA B1603APC
Argentina

info@upspolaris.com
(5411) 5235-UPSS (8777)

www.upspolaris.com